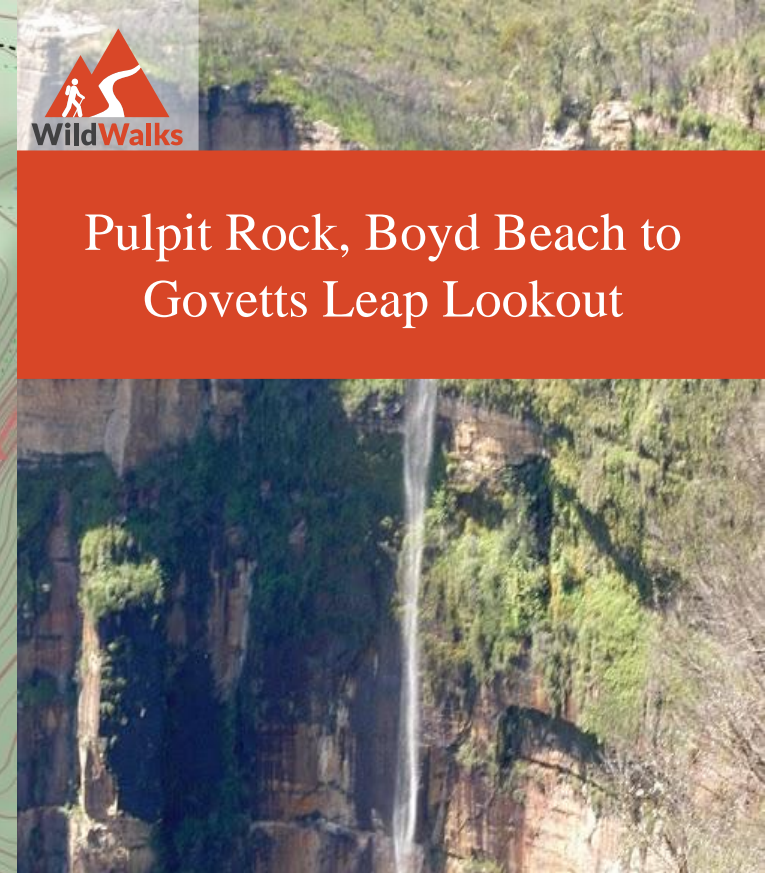
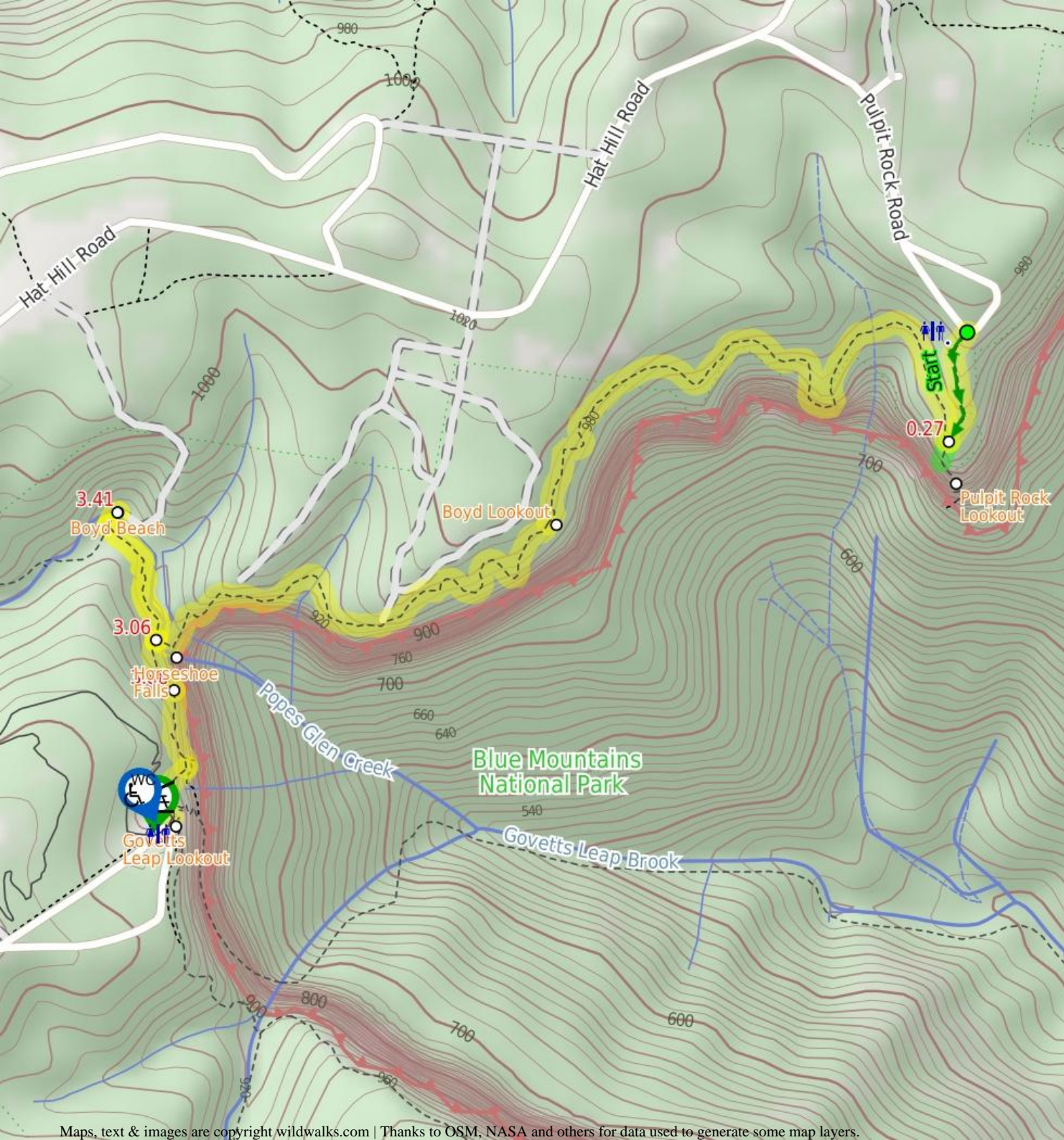


## Pulpit Rock, Boyd Beach to Govetts Leap Lookout



**2 hrs 30 mins**

**Hard track**

**4.2 km One way**

**↑ 445m**

4

This section of the Cliff Top Track takes in the beautiful scenery east of Blackheath. The track leaves Pulpit Rock car park and drops into many lookouts with views over waterfalls and the Grose Valley. The track heads out to the secluded creek bank of Boyd Beach, and then continues, back along the track, and climbs to the magnificent views from Govetts Leap Lookout.



Blue Mountains National Park



### Are you ready to have fun?

Please ensure you and your group are well prepared and equipped for all possible hazards and delays. Check park closures, weather information and Fire Danger Rating before setting out. Optional side trips and alternate routes noted are not included in this walks overall grade, length or time estimate. Please allow extra time for resting and exploring areas of interest. The authors, staff and owners of wildwalks take care in preparing this information but will not accept responsibility for any inconvenience, loss or injury you may experience. Please take care, have fun - Happy Walking.

**Getting there** You can get to Pulpit Rock car park (gps: -33.618, 150.3285) by car or bus. Car: There is free parking available.

You can get back from Govetts Leap Lookout (gps: -33.628, 150.3113) by car or bus. Car: There is free parking available.

Find up to date and more information including; travel directions, weather, park closures and walker feedback at <http://wild.t/prbbtgll>

### 0 | Pulpit Rock car park

(270 m 8 mins) From the car park, the walk follows the sign to 'Pulpit Rock Lookout', down the stairs from the car park. The track continues down to a shelter and toilet, and then steeply heads down another flight of stairs, before flattening out and then descending more stairs to the signposted intersection.

### 0.27 | Optional sidetrip to Pulpit Rock Upper Lookout

(50 m 1 mins) Continue straight: From the intersection, this walk goes down the stairs, following the sign to 'Pulpit Rock'. The track heads down the hill to a flat area with awesome views over the Grose Valley. At the end of this side trip, retrace your steps back to the main walk then Turn right.

### 0.27 | Pulpit Rock Lookout

Pulpit Rock Lookout, Blue Mountains National Park, looks over the Grose Valley and back towards Blackheath, with Bridal Veil Falls and the Govetts Leap cliff edge in view. The lookout has many levels with the uppermost lookout having the easiest access.

### 0.27 | Int. Pulpit Rock Trk and Pulpit Rock Lookout Trk

(2.8 km 1 hr 31 mins) Turn right: From the intersection, this walk does not follow the signs to the 'Carpark' or 'Pulpit Rock', but instead leads away from the stairs and into a gully. The track rounds the gully, dropping into a creek before it heading uphill to the cliff tops again. The track continues to undulate along the clifftops, with the views of the valley to the left. The track winds in and out of gullies for approximately 1km to the fenced viewing area of Boyd Lookout.

Continue straight: From the lookout, this walk heads along the hillside with the valley below to the left. The track leads along the hillside for some time, in and out of gullies, to then head down into a gully facing Horseshoe Falls. The track rounds the gully, passing across a creek to a railed lookout on the left. The track then heads under a cliffline to a railed section of track, which winds down the hill steeply to the street-signposted intersection after Popes Glen Creek.

### 3.06 | Boyd Lookout

Boyd Lookout, Blue Mountains National Park, looks over the Grose Valley with a spectacular view over Pulpit Rock to the east. It is an unfenced, informal lookout.

### 3.06 | Int. Popes Glen Trk and Pulpit Rock Trk

(340 m 8 mins) Veer right: From the intersection, this walk follows the sign to 'Popes Glen' keeping the creek below on the right. The track continues for approximately 100m, rising to the left of a prominent rock feature. The walk passes another track on the right (with access to the creek), then continues to rise past the rock feature (on the right - The rock feature has a trail to its top.) This walk continues from the rock feature, heading down the hill to a signposted intersection.

Turn right: From the intersection, this walk heads down the hill following the 'Boys Beach' sign (under the bush). The walk winds down the rocky steps for approximately 40m to Boyd Beach.

### 3.41 | Boyd Beach

Boyd Beach, Blue Mountains National Park, is a small sandy bank on Popes Glen Creek. The beach is a quiet spot with nice ferns and shade. The beach is a short distance from the Popes Glen track.

### 3.41 | Boyd Beach

(480 m 12 mins) Turn around: From Boyd Beach, this walk heads up the hill away from the creek, winding up the rocky steps for approximately 40m to the signposted intersection.

Turn left: From the intersection, this walk follows the 'Govetts Leap' sign, climbing for approximately 50m past a rock feature (below on the left - there is a track to the top of this feature). The walk continues along the creek line, keeping the creek on the left, and passes a track (accessing the creek). This walk continues for approximately 100m, heading through a ferny area to an intersection near the creek, marked by 'Popes Glen' and 'Govetts Leap' signs.

Continue straight: From the intersection, this walk follows the 'Govetts Leap' sign through the ferns, with the creek to the left of the track, and comes to a set of stairs. The walk climbs the steep stairs to follow the railing around a rocky outcrop. The track then winds along the hillside for some time heading to

pass a lookout on the left, as the track continues to the intersection near the Horseshoe Falls Lookout.

### 3.88 | Horseshoe Falls

Horseshoe Falls, Blue Mountains National Park, are sourced by Popes Glen Creek which runs over the cliff into the Grose Valley. The Horseshoe Falls seem to be named after the shape of the valley into which they drop.

### 3.88 | Horseshoe Falls Lookout

(340 m 11 mins) Continue straight: From the intersection, this walk winds along the cliff top with the valley below to the left. The walk then leads steeply up the stairs to the intersection at the viewing area.

Veer right: From the intersection, this walk heads up the stairs, keeping the valley to the left. The walk heads up and around the hillside to cross over a bridge, then up more stairs to the intersection.

Turn right: From the intersection, this walk heads across the grassed area towards a platform structure. The walk climbs some stairs onto Govetts Leap Lookout, with its great views and sandstone monuments.

### 4.22 | Govetts Leap Lookout

Govetts Leap Lookout is named after the first European man to have enjoyed this view, William Govett, as an assistant surveyor in June 1831. Govetts Leap Lookout offers wonderful views over the Grose Valley and the spectacular Bridal Falls. The word `leap` is an old Scottish word meaning waterfall. The lookout is easily accessed from the car park, there are also toilets and picnic shelters nearby.