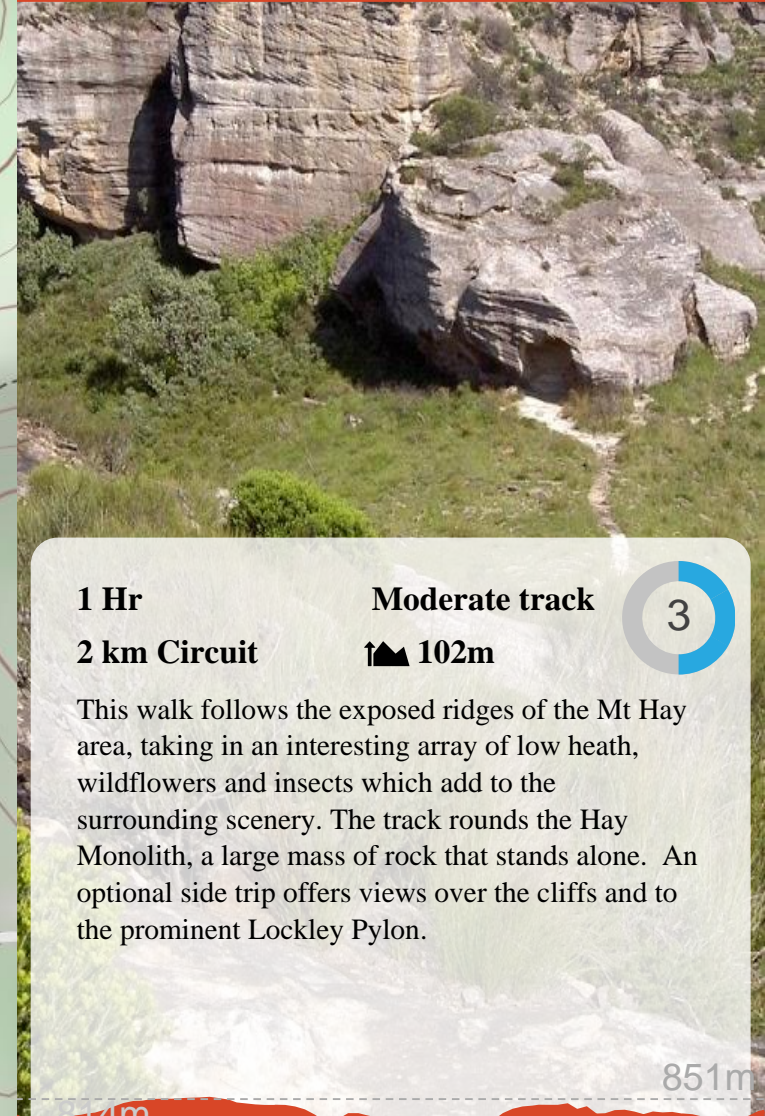
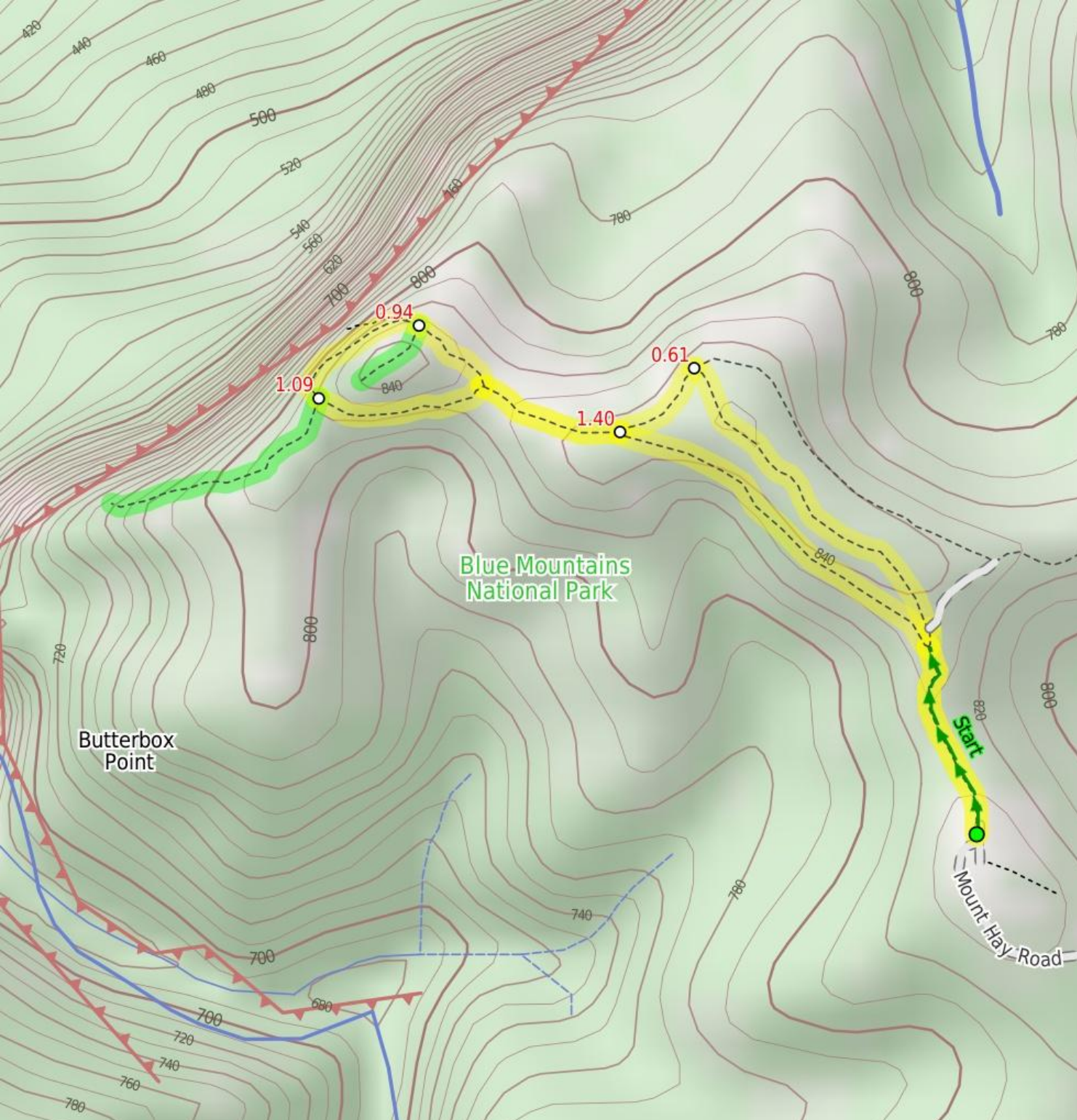


Hay Monolith



1 Hr

2 km Circuit

Moderate track

▲ 102m



This walk follows the exposed ridges of the Mt Hay area, taking in an interesting array of low heath, wildflowers and insects which add to the surrounding scenery. The track rounds the Hay Monolith, a large mass of rock that stands alone. An optional side trip offers views over the cliffs and to the prominent Lockley Pylon.

814m

851m

Are you ready to have fun?

Please ensure you and your group are well prepared and equipped for all possible hazards and delays. Check park closures, weather information and Fire Danger Rating before setting out. Optional side trips and alternate routes noted are not included in this walk's overall grade, length or time estimate. Please allow extra time for resting and exploring areas of interest. The authors, staff and owners of wildwalks take care in preparing this information but will not accept responsibility for any inconvenience, loss or injury you may experience. Please take care, have fun - Happy Walking. **Getting there** Traveling by car is the only practical way to get to Mt Hay car park (gps: -33.6299, 150.402). Car: There is free parking available. This is a circuit, so you will finish back at the start.

Find up to date and more information including; travel directions, weather, park closures and walker feedback at <http://wild.t/hm>

0 | Mt Hay car park

(610 m 12 mins) From the car park, this walk heads past the gap in the train track-style fencing, passing a sign for 'Butterbox Canyon'. The track traverses the saddle to rise up onto a flat area, continuing for approximately 20m to an intersection with a track to the left.

Veer right: From the intersection, this walk heads approximately 20m up the hill, keeping the rocky knoll to the left of the track, soon coming to the intersection.

Veer left: From the intersection, this walk heads up the hill, with Mt Hay to the right of the track. The track follows the ridgeline, undulating slightly for approximately 200m, then drops down to a rocky surface at the intersection.

0.61 | Rock Flat

(100 m 2 mins) Turn left: From the intersection, this walk heads along the hillside, keeping the hill on the left-hand side of the track and the main valley on the right. The track leaves the hillside, leading out through the low heath for approximately 50m, coming to an unsigned intersection.

0.71 | Int. Valley Trk and Hay Wall Trk

(240 m 5 mins) Veer right: From the intersection, this walk heads down hill towards a small castle of rock, Mt Hay Monolith. The walk keeps the main valley to the right of the track. The track soon heads down some rocky surfaces to continue into a saddle. The walk heads across the saddle to a small, spherical cave (to the left of the track).

Veer right: From the spherical cave, this walk keeps the rock to the left of the track, heading towards the valley. The track leads around the base of the cliffs for approximately 80m before coming to a grassy pass into the cliff (on the left).

0.94 | Optional sidetrip to Hay Monolith summit

(80 m 3 mins) Turn left : From the intersection, this walk heads up through the grassy pass in the rock, away from the valley. The track leads across the plateau through the low heath, passing a track (on the right) after approximately 50m. The walk soon comes to a flat rock with two bolts in it, where there are stunning views over the Grose Valley. At the end of this side trip, retrace your steps back to the main walk then Turn left.

0.94 | Int. Hay Wall Trk and Hay Monolith summit Trk

(150 m 5 mins) Continue straight: From the intersection, this walk heads around the cliffs (keeping them on the left of the track, and the Grose Valley to the right). After approximately 50m, the walk passes another track (on the left, heading up the monolith). This walk continues around the base of the cliffs and above the valley for approximately 100m, to the

intersection in front of a fin-shaped rock.

1.09 | Optional sidetrip to Hay Wall Lookout

(250 m 8 mins) Veer right: From the intersection, this walk heads down the hill, leaving the Hay Monolith behind and nearing the rim of the valley (on the right). The track passes a large, grey, rounded rock formation on the right, heading in the direction of the cliff edge, to a rocky point on the right of two banksia bushes, with stunning views of the valley. At the end of this side trip, retrace your steps back to the main walk then Turn right.

1.09 | Hay Monolith West

(310 m 7 mins) Continue straight: From the intersection, this walk heads down over some rocky surfaces (with the cliffs to the left and valley behind). The track continues below the cliffs, passing a few small caves on the left. After a short time, this walk rounds the hillside to a spherical cave on the left of the intersection, and a saddle to the right.

Turn right: From the spherical cave, this walk traverses a grassy saddle, keeping the valley to the left of the track. The track climbs up some rocky surfaces, then heads east up the spur line, coming to the intersection in the low heath.

1.4 | Int. Valley Trk and Hay Wall Trk

(590 m 13 mins) Veer right: From the intersection, this walk heads away from the Grose Valley and along the hillside, keeping the ridge above and to the left of the track. The track passes many rocky outcrops (with the valley below to the right) as the walk comes to an intersection just above a saddle (on the right).

Veer right: From the intersection, this walk heads away from the rocky outcrops on the hill to traverse the saddle and rise up to the car park.

